

CIRCULAR EXTRACTORS LEAF SPRING



The machine is designed to remove the material at the bottom of a silo in order to favour dropping it into extraction screws.

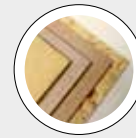
TECHNICAL FEATURES

- Drum rotor made of welded steel plates • Strong arms made of steel for springs • Strong execution planetary gear box • 2 devices to limit the movement of the arms • Progressively variable pitch screw/s for better accuracy
- Electronic level indicator for screw empty condition • Up to 6 different dosing screws for discharge.

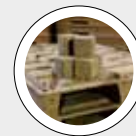
BENEFITS

- Versatile destorage-dosing system for wet or dry fractioned materials i.e. chips, sawdust, shavings, particles, dust, fiber, etc. • Wide range of extraction capacity achieved by controlling the dosing screws with frequency converters
- High dosing accuracy from progressively variable pitch screws • Reliable control of the silo levels • Simple and cheap system • High reliability • Very low maintenance cost.

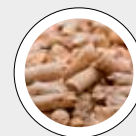
BEST IN CLASS FOR:



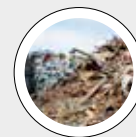
WOOD BASED PANELS:
MDF/HDF
PB/SPB
OSB/LSB/FOSB
INSULATION BOARDS



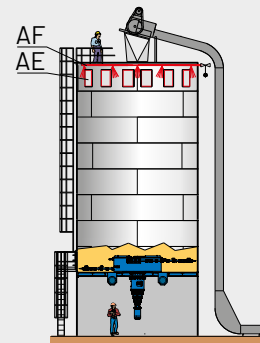
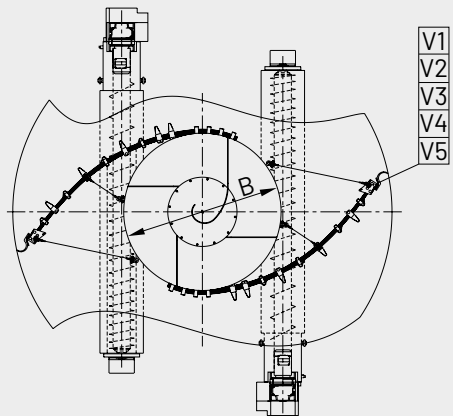
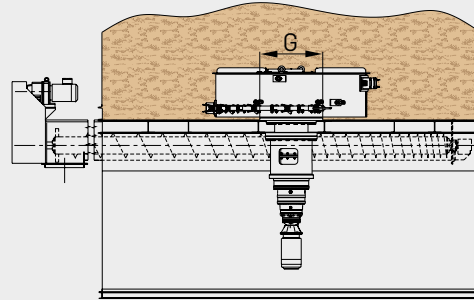
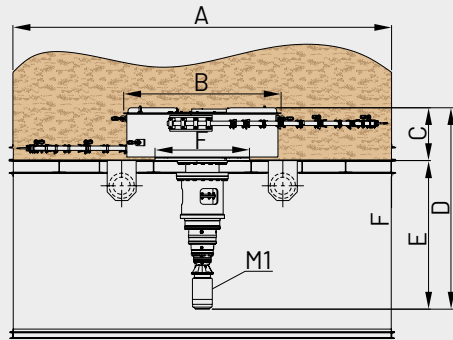
PRESSED WOOD PACKAGING:
PALLET BLOCKS



PELLETS & ENERGY:
WOOD PELLETS AND
BLACK PELLETS
THERMAL AND
ELECTRIC ENERGY



WOOD RECYCLING AND
WASTE TREATMENT:
CUSTOMIZED SOLUTIONS
FOR RECYCLING



M1 = MAIN MOTOR
FOR DRY MATERIAL ONLY
 AF = FIRE-EXTINGUISHING SYSTEM
 AE = EXPLOSION VENTS

MATERIAL TO PROCESS
 V1 = TRIMMING, 60-150 KG/M³
 V2 = FIBER, 25-50 KG/M³

V3 = DUST, 1550-220 KG/M³
 V4 = SAWDUST, 100-130 KG/M³
 V5 = FLAKES, 100-150 KG/M³

MODEL	OVERALL DIMENSIONS mm							INSTALLED POWER kW	EXTRACTION CAPACITY m ³ /h	WEIGHT APPROX. kg
	A	B	C	D	E	F	G	M1		
LSE.4,5-2,0-V...	4500	2000	840	3000	2160	1500	1000	Wide range available, according to project Customer needs	According to ensiled material and extraction capacity	2300
LSE.5,0-2,0-V...	5000	2000	840	3000	2160	1500	1000			2400
LSE.5,5-2,5-V...	5500	2500	840	3200	2360	1500	1000			3300
LSE.6,0-2,5-V...	6000	2500	840	3200	2360	1500	1000			3500
LSE.6,5-2,5-V...	6500	2500	840	3400	2360	1500	1000			5300
LSE.7,0-3,0-V...	7000	3000	840	3600	2760	1500	1000			5600