

FERROUS METALS REMOVERS

**ELECTROMAGNETIC DRUMS – MD.EL**

FOR BULKY OR PRE-CRUSHED RECYCLED WOOD



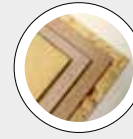
The machine is designed for continuous and automatic separation of ferromagnetic material from inert materials such as sand, grains, chips, shavings, etc through a electro-magnetic drum. Normally this type of machine is installed on the outside of conveyors, whether made up of belts, slides, vibrating planes, ducts, etc.

**TECHNICAL FEATURES**

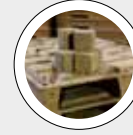
- Front shaft fitted with direct transmission • System for special applications
- Big and extra-strong electromagnetic drum fitted with bearings and supports
- Drive system.

**BENEFITS**

- Very high efficiency and reliability • Strong removal of ferrous pollutants (also huge pcs) from bulky or pre-crushed recycling wood, e.g. before pre-crusher, crusher or drum chipper • Simple installation • Low maintenance.

**BEST IN CLASS FOR:**

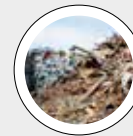
WOOD BASED PANELS:  
MDF/HDF  
PB/SPB  
INSULATION BOARDS



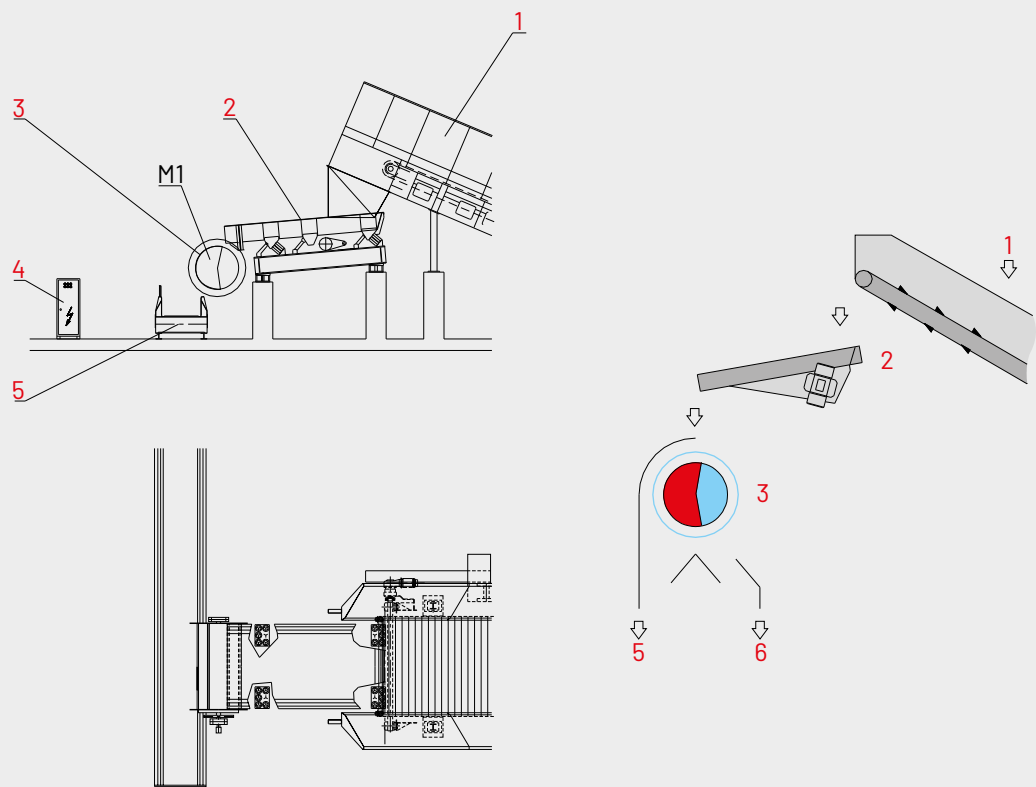
PRESSED WOOD PACKAGING:  
PALLET BLOCKS



PELLETS & ENERGY:  
WOOD PELLETS AND  
BLACK PELLETS  
THERMAL AND  
ELECTRIC ENERGY



WOOD RECYCLING AND  
WASTE TREATMENT:  
CUSTOMIZED SOLUTIONS  
FOR RECYCLING



- 1 = FEEDING  
2 = VIBRATING CHANNEL  
3 = ELECTROMAGNETIC DRUM
- 4 = ELECTRIC CUBICLE  
5 = CLEAN CHIPS TO U-FEEDER OF CRUSHER  
6 = FERROUS METAL REMOVED
- M1 = MAGNETIC DRUM ROTATION



MODEL	CAPACITY BULKY STUFF m³/h	ELECTROMAGNETIC DRUM mm		INSTALLED POWER kW	ELECTRIC CUBICLE kW	WEIGHT APPROX. kg
		DIAM.	WIDTH	M1		
MD.1500x2500.MRD-EL	440	1500	2500	9,2	20	17000
MD.1500x3000.MRD-EL	530	1500	3000	9,2	20	19800