

BELT CONVEYOR – NTL



The machine is ideal for low speeds and short lengths, mainly used before the chipper or for direct loading of heavy logs.

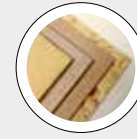
TECHNICAL FEATURES

- Available length: from 4 to 20 meters
- Belt width: up to 1,800 mm, adaptable to the type of material being processed
- Reinforced structure, designed to ensure resistance to wear and impacts
- Compatible with metal detectors, for efficient material selection
- Reinforced impact zone, with specific coatings to protect the belt
- Adjustable speed control via inverter, to optimize material flow

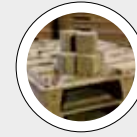
BENEFITS

- Tailored solutions to match different speed and length requirements
- Reinforced structure – built to withstand impacts, wear, and heavy loads
- Constant material flow – speed regulation ensures uniform and uninterrupted feeding
- Metal detector integration – detects and removes metal contaminants, protecting downstream machinery

BEST IN CLASS FOR:



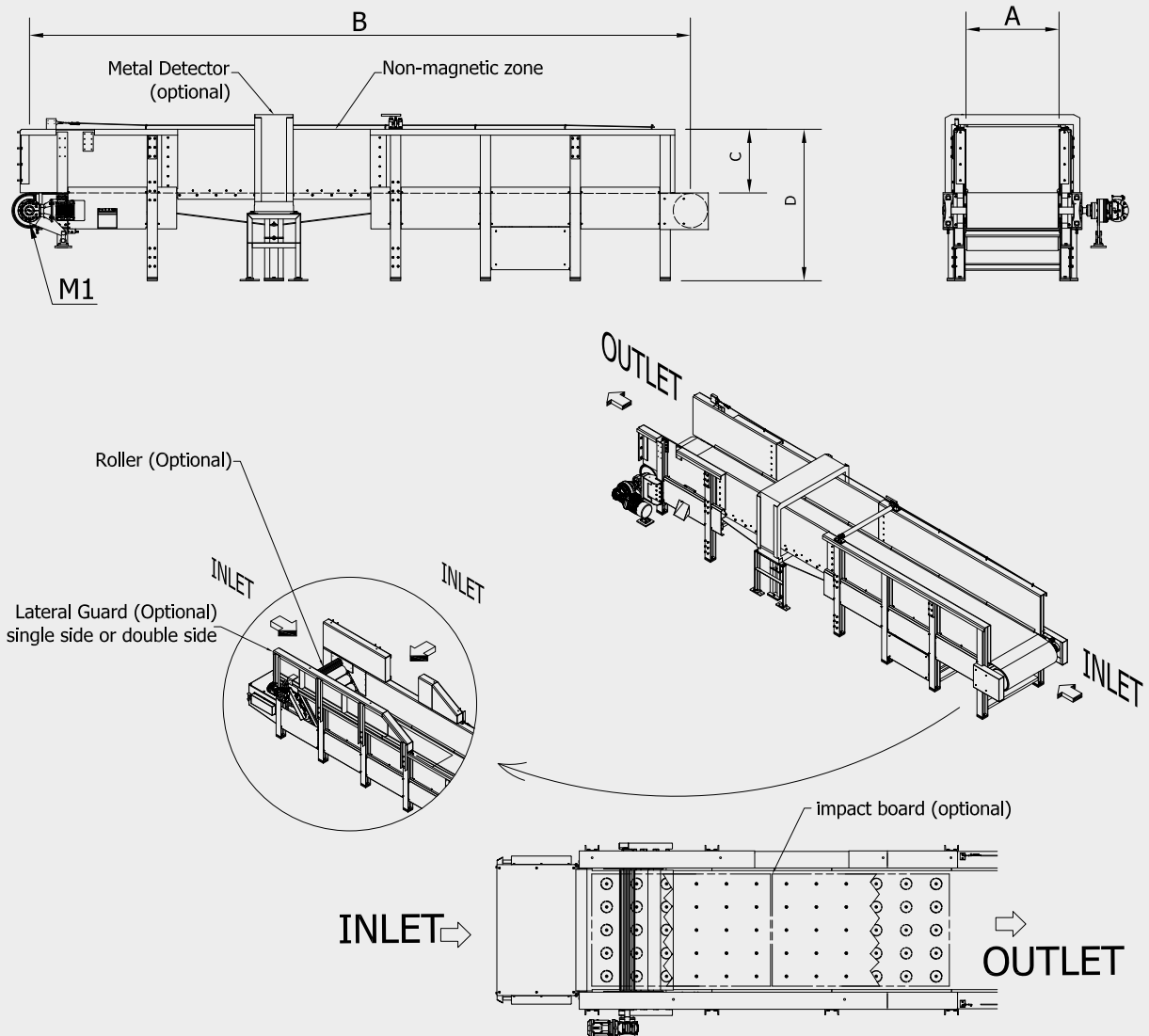
WOOD BASED PANELS:
MDF/HDF
PB/SPB



PRESSED WOOD PACKAGING:
PALLET BLOCKS
PRESSED PALLETS



PELLETS & ENERGY:
WOOD PELLETS AND
BLACK PELLETS
GREEN FUELS AND BIOMASS



M1 = VIBRATING MOTOR

MODEL	OVERALL DIMENSIONS mm***				Metal Detector
	A	B	C	D	
NTL**	600 ÷ 1650	500 ÷ 1500	300 ÷ 1000	1700 ÷ 2600	optional

MODEL	CAPACITY m³/h	POWER kW	WEIGHT kg
		M1	
NTL**	***	2.5 ÷ 22	4000 ÷ 12500

***According to customer needs

**According to dimensions