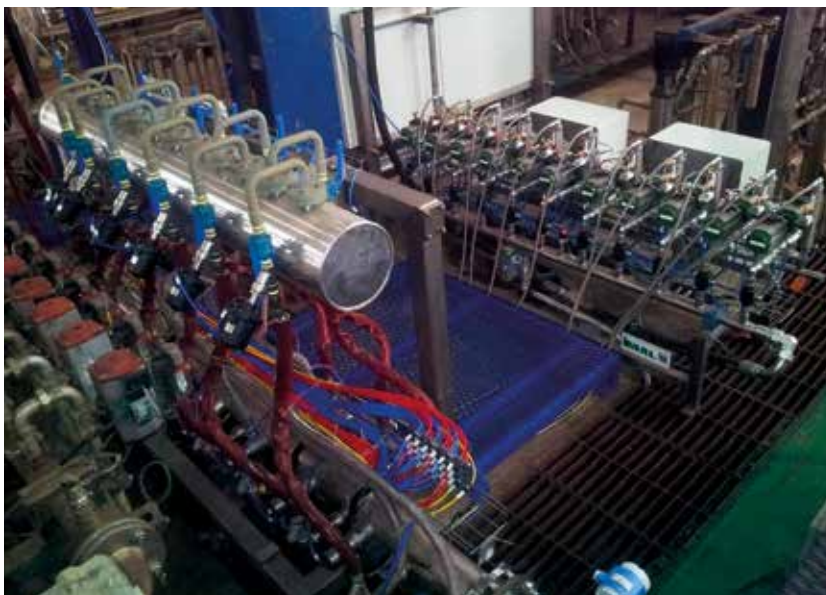
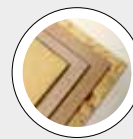


RESINATION SYSTEM

MDF HI-JET BLOW-LINE

TO ACHIEVE OPTIMAL RESIN DISTRIBUTION IN THE MANUFACTURE OF MDF PANELS

**BEST IN CLASS FOR:**WOOD BASED PANELS:
MDF/HDF

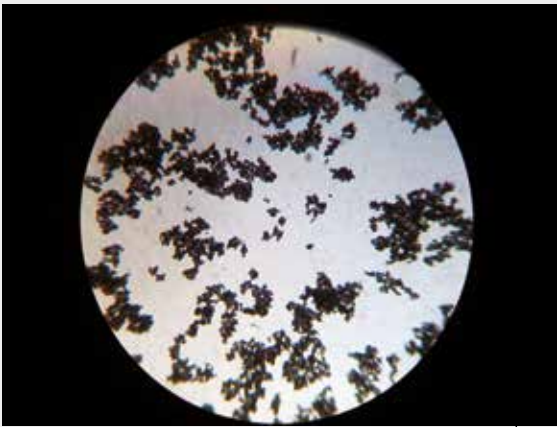
MDF HI-JET BLOW-LINE is a resination system designed to achieve optimal resin distribution in the manufacture of MDF panels.

The system's technology is based on 2 principal aspects: • to reduce and pulverize the resin crystals • to amply distribute the resin over the fibre at high pressure.

Thanks to a new system designed by IMAL, the resin crystals are reduced by a special refiner which can multiply the gluing surface by approximately 1000 times. This is why it is possible to reduce resin consumption requirements. The resin is then applied at high pressure to cover the entire surface of the fibre.

It is possible to achieve reductions in resin consumption ranging from a minimum of 10% up to and, in certain cases, over 20%.

RESIN BEFORE
PULVERIZATION AND FILTERING



RESIN AFTER
PULVERIZATION AND FILTERING

