

## OPTICAL SORTER **CYCLOPS X-RAY**

PATENTED



The machine is designed and built to separate the pollutants from the bulk material through the use of X-RAY cameras.

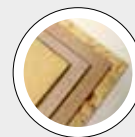
### TECHNICAL FEATURES

- High speed belt for monolayer and multilayer particles transfer
- High efficiency and constant performance of x-ray camera
- Integrated sw control system
- Selecting unit with compressed air
- Discharge hopper with selecting flap
- Heavy construction for continuous operation.

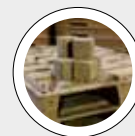
### BENEFITS

- Possibility of feeding any type of raw wood
- Removal of many kind of pollutants, plastic, metals, inerts and heavy material
- Very high efficiency
- Compact layout
- Low maintenance
- Easy control and adjustment.

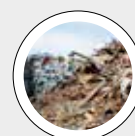
### BEST IN CLASS FOR:



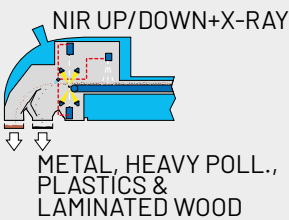
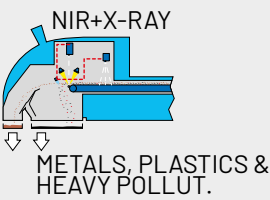
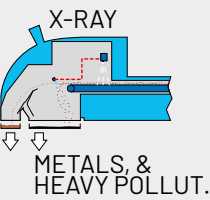
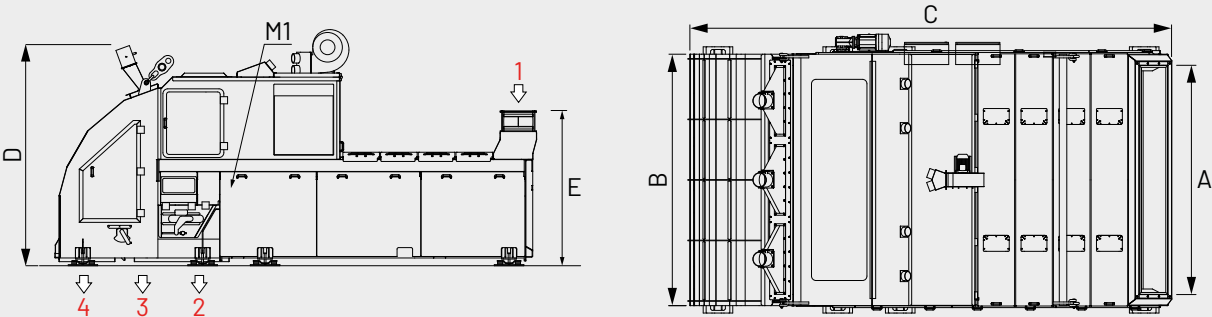
WOOD BASED PANELS:  
MDF/HDF  
PB/SPB



PRESSED WOOD PACKAGING:  
PALLET BLOCKS



WOOD RECYCLING AND  
WASTE TREATMENT:  
CUSTOMIZED SOLUTIONS  
FOR RECYCLING



1 = INLET MATERIAL  
2 = POLLUTANTS AND METALS

3 = HEAVY MATERIAL  
4 = CLEANED MATERIAL

M1 = BELT ROTATION

MODEL	OVERALL DIMENSIONS mm				
	A	B	C	D	E
XCS.1200	1200	1940	6460	3000	1910
XCS.1.1200	1200	1940	6460	3000	1910
XCS.2000	2000	2730	6460	3000	1910
XCS.2.2000	2000	2730	6460	3000	1910

MODEL	CAPACITY		INSTALLED POWER kW		EXHAUST AIR FLOW (m³/h)
	MICRO CHIPS 10-30 mm	MACRO CHIPS >30 mm	M1	M2	
XCS.1200	130 m³/h	130 m³/h	3	-	3000
XCS.1.1200	35 m³/h	60 m³/h	3	1,10	3000
XCS.2000	200 m³/h	200 m³/h	4	-	4000
XCS.2.2000	70 m³/h	120 m³/h	4	1,50	4000