

CENTRIFUGAL CLEANER

CLEANER FOR FRESH OR RECYCLED FINES - PATENTED



The machine is designed to select the incoming bulk material by its size. The first stage of the process is carried out in the Centrifugal Cleaner. The input material is separated from the finer particles, which are considered waste, by the centrifugal action of a rotor and filtration through fixed screens. The accepted wooden material, now free of any contaminants and within the required granulometric range, is collected in the output hopper.

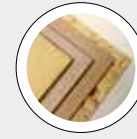
TECHNICAL FEATURES

- Wear proof injection screw • Wear proof centrifugal unit • Wear proof cleaning chamber • Fire-extinguishing nozzles and explosion vents if necessary
- Dust proof and compact unit.

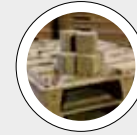
BENEFITS

- Efficient cleaning of the very fine fraction highly polluted by small mineral grits, from fresh or recycled wood fines • Saving of useable wood • Lower wearing of downstream machines: MDF refiners – knife ring flakers • Low cost
- Low energy consumption • Easy maintenance.

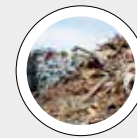
BEST IN CLASS FOR:



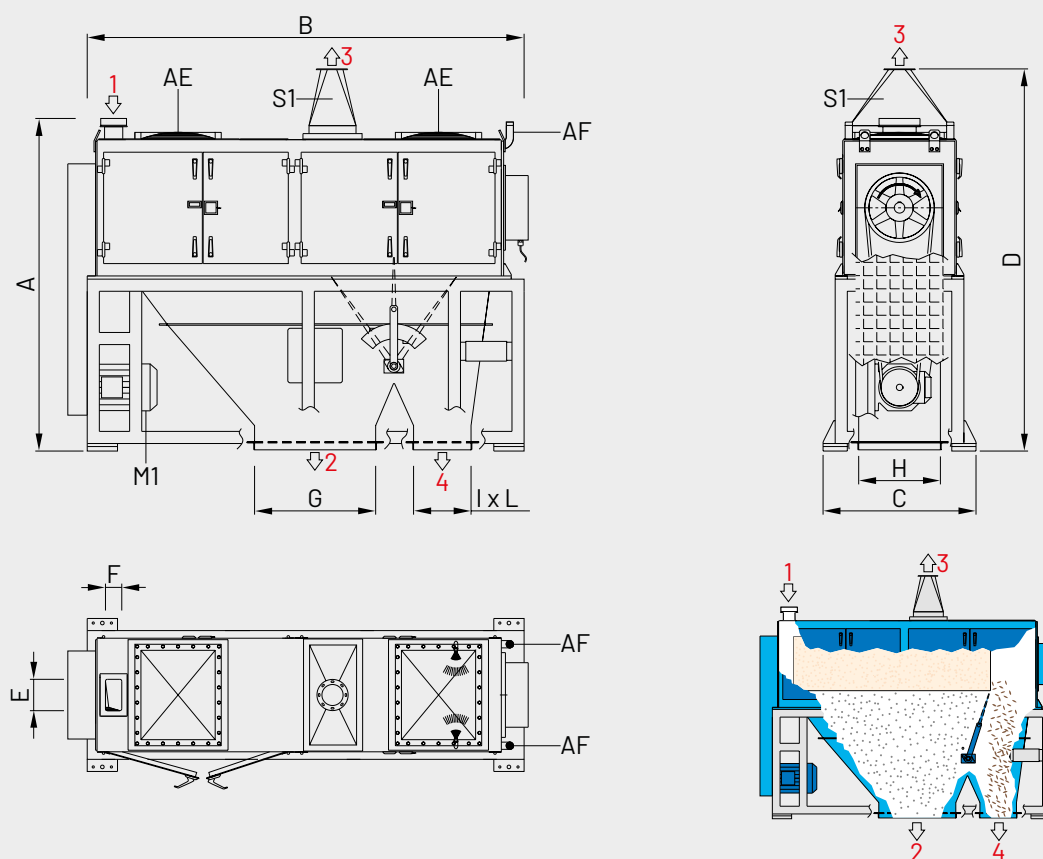
WOOD BASED PANELS:
PB/SPB



PRESSED WOOD PACKAGING:
PALLET BLOCKS



WOOD RECYCLING AND
WASTE TREATMENT:
CUSTOMIZED SOLUTIONS
FOR RECYCLING



AF = FIRE-EXTINGUISHING NOZZLES
(NECESSARY FOR DRY MATERIAL)
AE = EXPLOSION VENTS
(NECESSARY FOR DRY MATERIAL)

1 = FEEDING MATERIAL
2 = FINES POLLUTED BY SMALL MINERAL GRITS
3 = EXHAUSTED DUST

4 = ACCEPTS/CLEAN
M1 = MAIN MOTOR

MODEL	OVERALL DIMENSIONS mm									
	A	B	C	D	E	F	G	H	I	L
CC.50/220	2196	2885	1010	2523	207	110	800	540	380	540
CC.75/220	2196	2885	1260	2523	457	110	800	790	380	790
CC.100/220	2613	4440	1710	2613	590	380	1430	900	440	900
CC.2.100/220	2613	4440	3280	2613	2 x 590	380	1430	2 x 900	440	2 x 900

*According to infeed material

MODEL	CAPACITY BULK* m³/h	INSTALLED POWER kW		SUCTION m³/h	WEIGHT APPROX. kg
		M1		S1	
CC.50/220	12	22		1 x 1550	2050
CC.75/220	18	30		1 x 2050	2500
CC.100/220	24	37		1 x 2500	7000
CC.2.100/220	48	2 x 37		2 x 2500	14000