

# WIND CLEANER

CLEANER FOR RECYCLED FINES



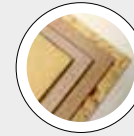
## TECHNICAL FEATURES

- Cleaning chamber fitted with: adjustable feeding flaps – cleaning sections – exhaust air recovery – rotary valve for the discharge of heavy pollutants
- Sifting system based on sequentially differentiated fluidization speeds • Fan
- Discharge cyclone with rotary valve for clean particles • Piping with flaps to adjust the fluidizing speed.

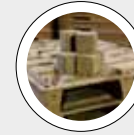
## BENEFITS

- Removal of heavy pollutants out of recycled fines, wet and dry, e.g.: minerals such as sand, stones, metals, etc. – atypical pollutants such as ABS, plastics, rubber, glass, laminates, etc. • Highly reliable and flexible adjustment • Very high cleaning efficiency • Improved panel machinability • Low cost, low energy consumption, easy maintenance.

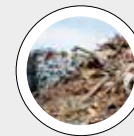
## BEST IN CLASS FOR:



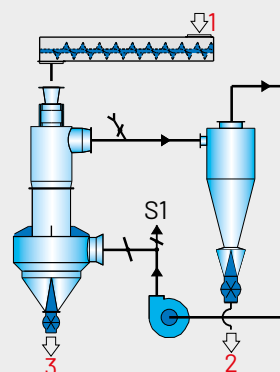
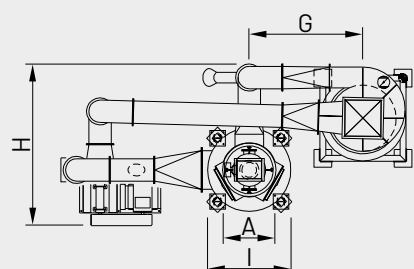
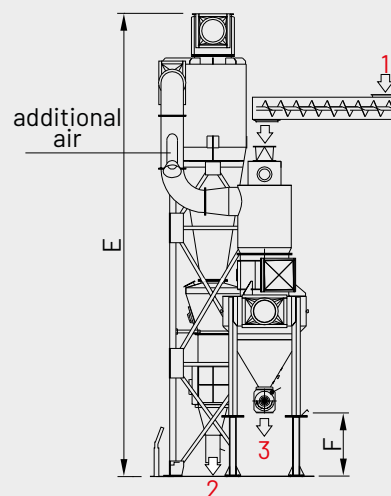
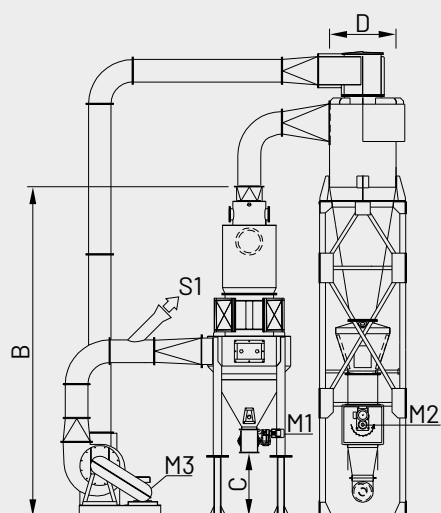
WOOD BASED PANELS:  
PB/SPB



PRESSED WOOD PACKAGING:  
PALLET BLOCKS



WOOD RECYCLING AND  
WASTE TREATMENT:  
CUSTOMIZED SOLUTIONS  
FOR RECYCLING



1 = INLET OF CONTAMINATED MATERIAL  
2 = ACCEPTS/CLEAN  
3 = REJECT

M1 = ROTARY VALVE OUT  
M2 = ROTARY VALVE IN  
M3 = FAN DRIVE

S1 = EXHAUST AIR

MODEL	OVERALL DIMENSIONS mm								
	A	B	C	D	E	F	G*	H	I
WCL.15/10	600	5261	1407	800	5290	772	10000	1300	1100
WCL.15/25	600	5261	1407	800	5290	772	25000	1300	1100
WCL.30/10	900	6912	2270	1120	7148	1200	10000	2269	1400
WCL.30/25	900	6912	2270	1120	7148	1200	25000	2269	1400

\*Maximum distance between centers

MODEL	CAPACITY TOP		INSTALLED POWER kW			EXHAUST AIR m³/h	WEIGHT APPROX. kg
	BULK m³/h	WET t/h	M1	M2	M3	S1	
WCL.15/10	7,5	1,5	1,5	1,5	11	1800	2800
WCL.15/25	7,5	1,5	1,5	1,5	15	1800	3800
WCL.30/10	15,0	3,0	1,5	1,5	15	3200	4600
WCL.30/25	15,0	3,0	1,5	1,5	30	3200	5550