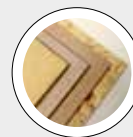


DENSIMAT

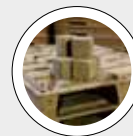
CLEANER FOR FINES, EXTRA FINES, DUST AND REJECT FROM DCC & WS



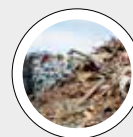
BEST IN CLASS FOR:



WOOD BASED PANELS:
PB/SPB



PRESSED WOOD PACKAGING:
PALLET BLOCKS



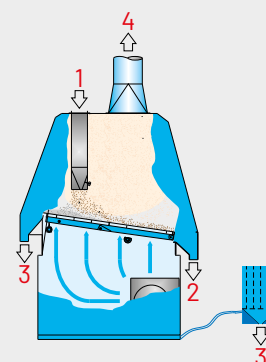
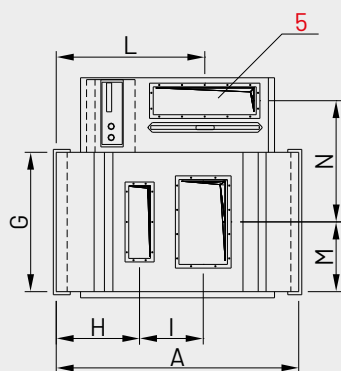
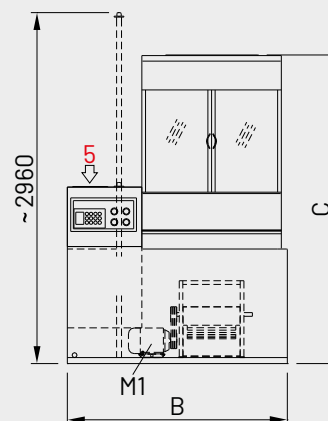
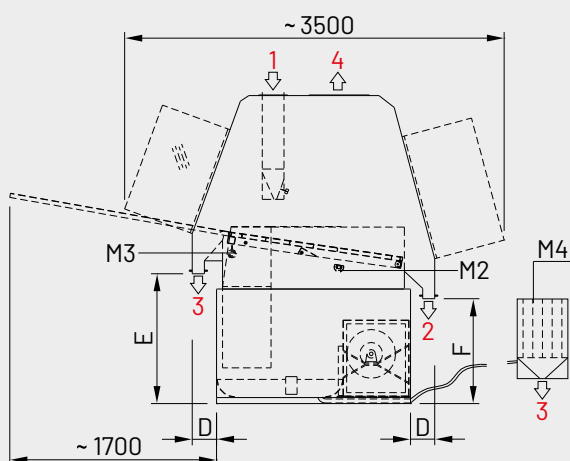
WOOD RECYCLING AND
WASTE TREATMENT:
CUSTOMIZED SOLUTIONS
FOR RECYCLING

TECHNICAL FEATURES

- Inlet spreader for material flow
- Densimetric table fitted with vibrating screen
- Fan for fluidizing air generation
- In-line air filter
- Cleaning parameters fully adjustable via keyboard, i.e.: screen inclination – vibration frequency – fluidizing air speed
- Self-cleaning device for chamber bottom
- Suction hopper with inspection doors
- Compact unit including electric-electronic devices for controls and adjustments.

BENEFITS

- Removal of sand from screening and sanding dust
- Removal of heavy pollutants from: thick-dry particles, i.e. rejects from SL & CL wind sifters – rejects from dry cleaners for chips type DCC
- Highly reliable and flexible adjustment for the removal of typical and atypical pollutants, e.g.: sand, stones, metals – plastics, rubber, glass, laminates, etc.
- Very high cleaning efficiency
- Cleaner combustion dust (and combustion chambers)
- Improved panel machinability
- Low cost, low energy consumption, easy maintenance.



1 = INLET
2 = CLEANED MATERIAL
3 = HEAVY POLLUTANTS

4 = VOLATILE-CLEANED MATERIAL
5 = FRESH-CLEANED AIR
M1 = FAN

M2 = SCREEN
M3 = INCLINATION ADJUSTER
M4 = SUCTION FOR CHAMBER CLEANING

| MODEL | OVERALL DIMENSIONS mm | | | | | | | | | | | |
|----------------|-----------------------|------|------|-----|------|-----|------|-----|-----|------|-----|------|
| | A | B | C | D | E | F | G | H | I | L | M | N |
| DSM.15.D | 2000 | 1815 | 2543 | 200 | 1070 | 865 | 1150 | 687 | 525 | 1224 | 575 | 1000 |
| DSM.15.D-CHIPS | 2000 | 1815 | 2543 | 200 | 1070 | 865 | 1150 | 687 | 525 | 1224 | 575 | 1000 |

| MODEL | CAPACITY t/h | | | | SUCTION S1 | | INSTALLED POWER kW | | | | WEIGHT APPROX. kg |
|----------------|-------------------------|-------------|-------------|--------------------|------------------------------|---------------|--------------------|------|------|-----|-------------------|
| | DUST | COARSE S.L. | COARSE C.L. | RECY-WET PARTICLES | THROUGHPUT m ³ /h | AIR SPEED m/s | M1 | M2 | M3 | M4 | |
| DSM.15.D | 0,8-12 | 1,4-1,6 | 1,4-1,6 | 1,2-1,6 | * | 29 | 4,0 | 0,75 | 0,17 | 1,0 | 1360 |
| | POLLUTED CHIPS FROM DCC | | | | | | | | | | |
| DSM.15.D-CHIPS | 2,0 - 2,5 | | | | 16000 | 29 | 11,0 | 0,75 | 0,17 | 1,0 | 1360 |

*4000 m³/h for dust or 6000 m³/h for other materials